



SAFETY RESCUE WORKBOAT (SRW) AIDE-MÉMOIRE



The Rigid Hull Inflatable Boats (RHIBs) are in service on the East and West coasts and inland waters of Canada for the Royal Canadian Sea Cadet program to provide on-water safety, rescue and workboat capabilities.



Introduction

- Vessel Purpose: replaces the motor workboats; and its primary purpose is as a support boat for onwater activities (whaler towing, multiple boats, etc).

Characteristics

- Travels at a max speed of 30 knots (normal operation speed is much lower).
- Designed for high torque (towing) not speed.
- Differs in agility / turning / increased danger of ejection / need to communicate course changes.
- Accommodates up to 6 people under normal operations (2 usual, 4 comfortable).
- Has places not to grab onto: windshield, navigation light post.
- Indicate crew positions and where to hold onto.

Engine / Motor

- Has a 90 hp, two-stroke oil injected engine that operator is not required to fill or maintain.
- Has internal gas tank with self-priming motor (no pump).
- Point out engine guard and indicate the tow line goes over not under and it is not to be used for towing or other activities.

Aft Towing Bollard

- One of two bollards used for towing.
- No standing behind bollard during towing.
- Can tow one fully loaded whaler or two empty whalers or 4–6 dinghies.

Bilge

- Open grey water access port.
- Show hose and bilge pump.
- Show how to use the manual bilge.
- Check automatic is working. Open hatch and listen.
- Go to manual, hear sound, flip to auto Bilge pump.
- Conduct bilge water alarm test / identify red light on console.
- Ensure toggle switch in manual position.
- Listen for tone or if water comes out.
- Bilge pump does not need battery switches in ON position.
- Scuppers versus bilge pump.

Bolster Seat

- Designed to stand up against and not for sitting.
- Can be used for 2 people but 1 preferred.

Ladder

- Show how to remove, install and stow.
- Indicate that safety lanyard must be secured at all times.
- Indicate that the Velcro is tied in the middle so that it fits into the 2 clips behind bolster seat.

Console

- Review 'no touch' areas.
- Show location of battery switches and when and how to turn on and off.
- Show anchor light.
- Show navigation lights.
 - o Flick switch to ensure working.
 - o Reinforce that the anchor light post is not a handle.
- Show compass.
- Show charging system – middle
- Show fuse panel and indicate lights should all be green.
- Show vent.
- Show bilge water alarm.
- Show GPS puck.
- Show battery area and reinforce that it is not to be used for storage.
- Reinforce that windshield should not be grabbed or held onto.
- Show boat hook.
- Show fire extinguisher.
- Locate and set charging switch to auto (red button).
- Show how to set toggle switches.
 - o Confirm that bilge pump is set to auto.
 - o Confirm running lights are off unless weather conditions dictate.
 - o Confirm navigation / anchor light is off.
 - o Test horn.
- Show gauges.
- Show 12 volt plug.

Jockey seat

- Indicate used for storage.

Show paddles

Show Inter Communicating (IC) Valves

- Explain boat has five chambers with four valves.
- Check valves are in proper position.
- Check set tube pressure.
- Show pressure release valves (never touch).
- Demonstrate how to set at 12:00 pm for filling and 6:00 pm all other times and how to pump up chambers.

Forward Storage Compartment (open gently)

- Show anchor, foot pump, and anchor line.

Fuel tank

- Gas only fuel system.
- Ensure water separator – fuel valve is turned on.
- Show level and gauges.
- Check fuel level.
- Check gauges are turned on.
- Show fuel filler location and primer bulb.
- Gas fill cap.
- Overflow is designed to capture the excess fuel that is collected in the fuel filter and cap area.

Hooks

- Not to be used for lifting.

Forward Towing Bollard

- Used for short duration tow only

Pre-Departure Checklist

Conduct pre-departure procedure using the checklist.

Starting Sequence

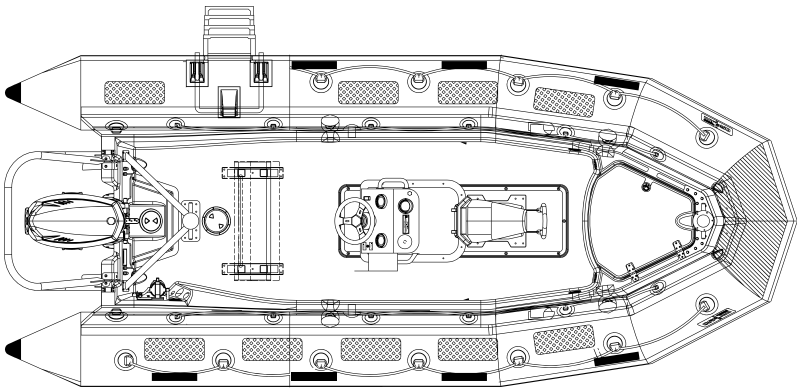
1. Open fuel line. Engine is self-priming. Choke and fast idle not required for start.
2. Insert key.
3. Attach safety lanyard to operator and to boat.
4. Check that toggle is set to AUTO.
5. Turn both battery switches to ON.
6. Turn the key to start engine.
7. Test safety lanyard by removing from ignition, after the engine has warmed up.

Conduct the following on-water manoeuvres

1. Leave the dock.
2. Manoeuvre at wake and no wake speeds.
3. Planing / trim.
4. Go in reverse.
5. Deploy / recover the ladder.
6. Return to the dock.

Shutdown / Storage

1. Close fuel line.
2. Switch off batteries.
3. Set bilge pump to AUTO.
4. Check scuppers are down.
5. Reattach safety lanyard to key.



PLAN VIEW